

# 2021 AN EARTH ODYSSEY

Based on the ELF publication "Climate Change and Migration"  
by Elin Jakobsson



script  
MARIAN COMAN

art and lettering  
PILLOWZOID STUDIOS



Published by the European Liberal Forum asbl. Based on the ELF publication "Climate Change and Migration" which was created with the support of FORES. Co-funded by the European Parliament. Neither the European Parliament nor the European Liberal Forum asbl are responsible for the content of this publication, or for any use that may be made of it. The views expressed herein are those of the script writer alone. These views do not necessarily reflect those of the European Parliament and/or the European Liberal Forum asbl.

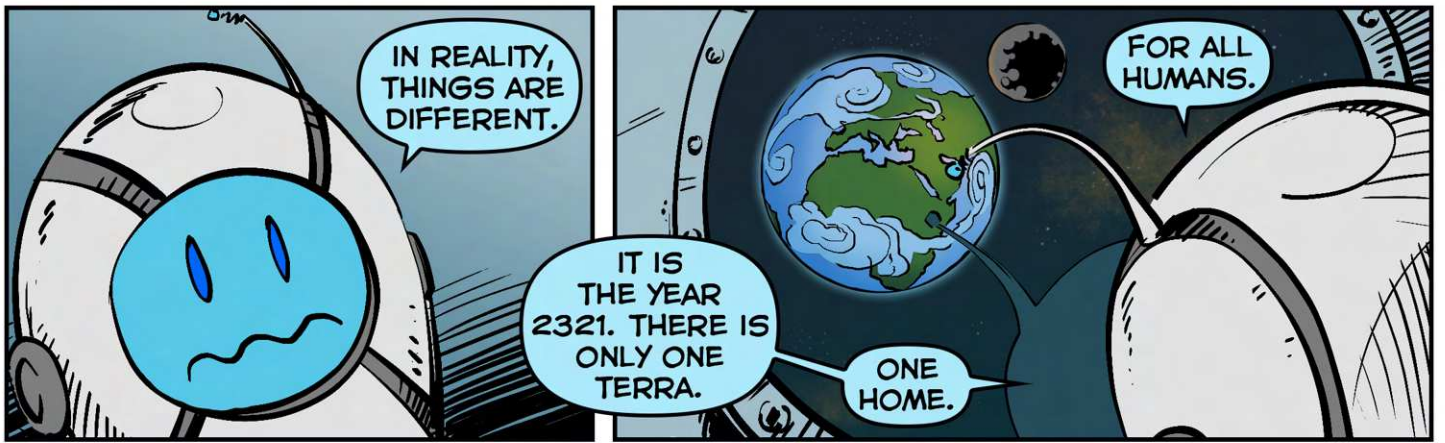
Publishing year - 2021

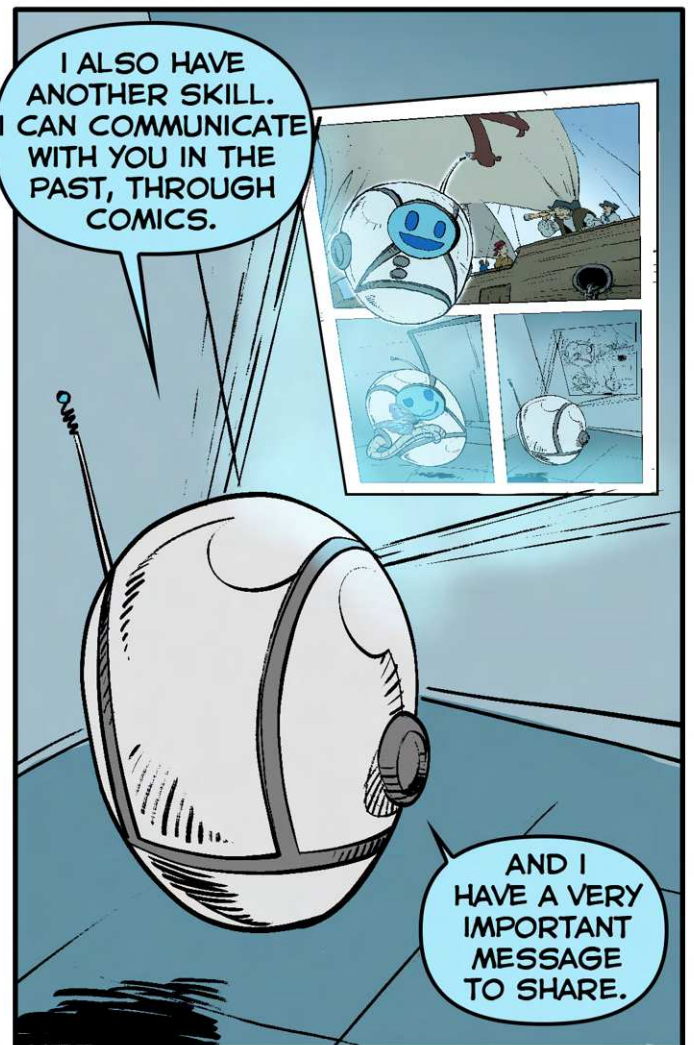
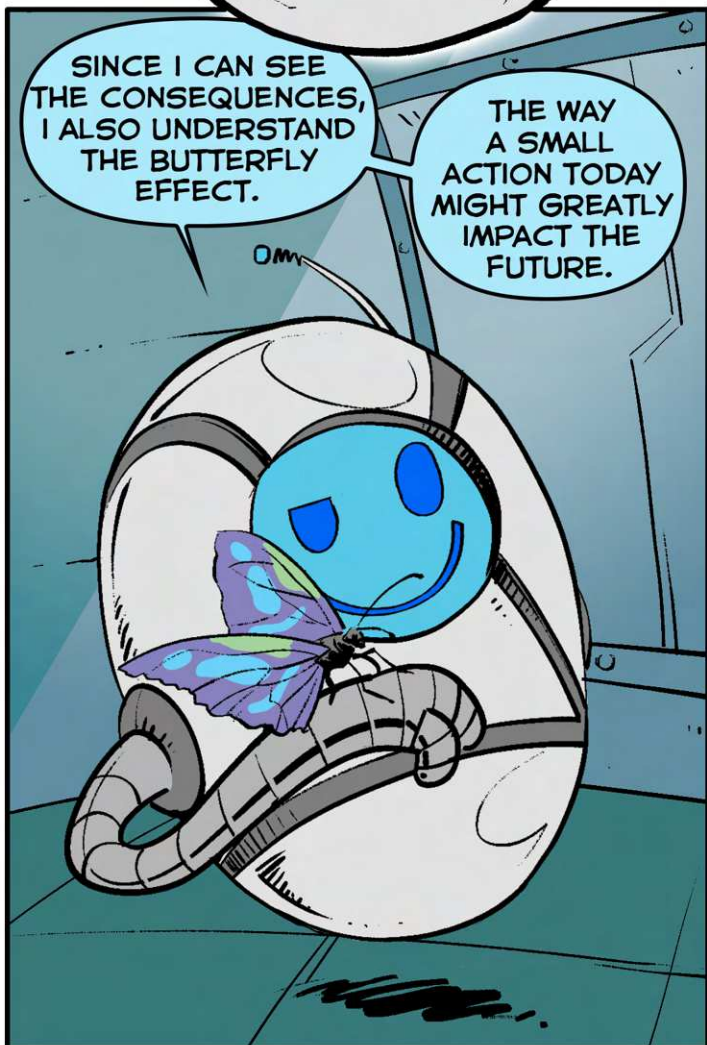
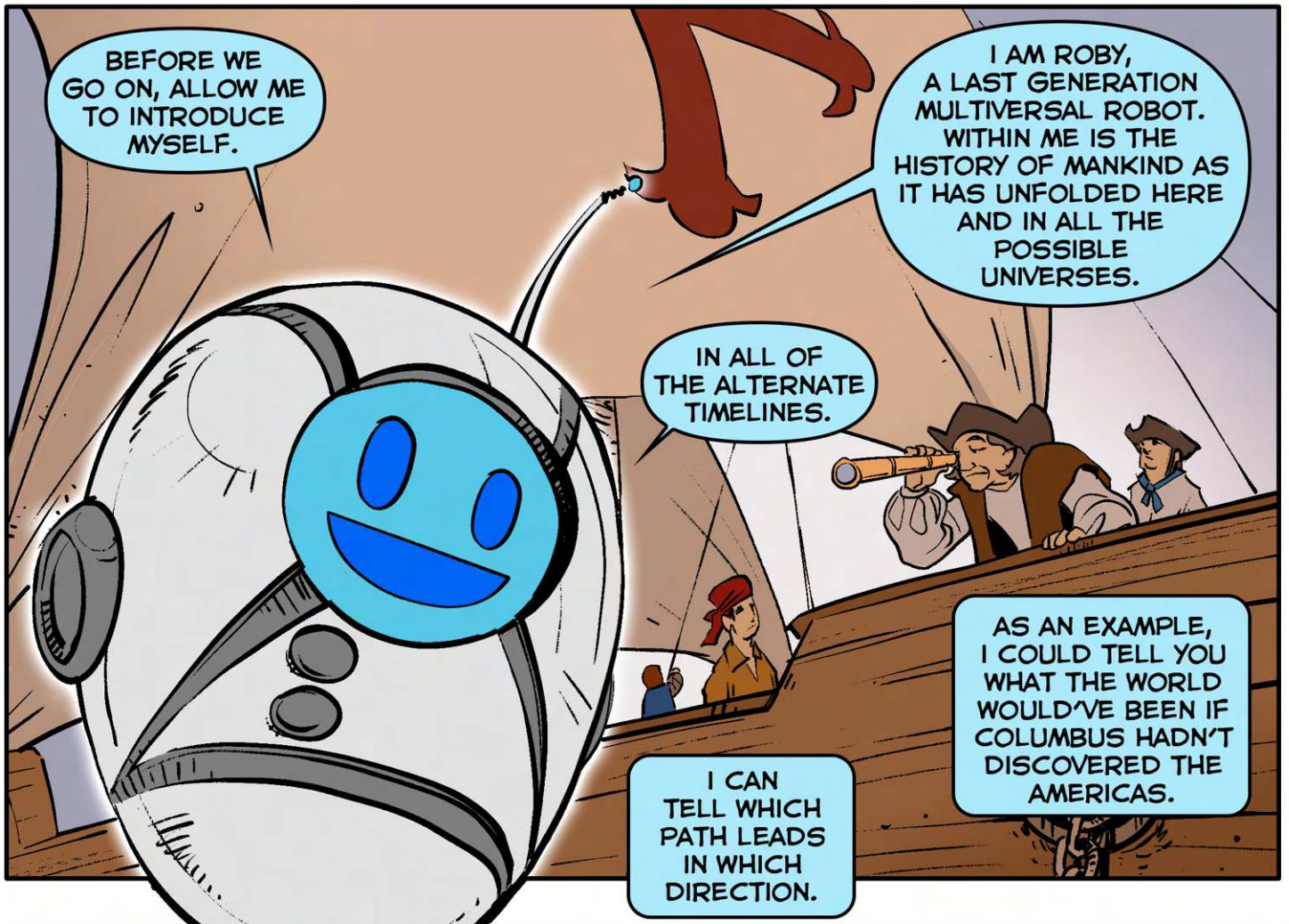
IN SCI-FI  
MOVIES AND BOOKS,  
WHEN CLIMATE CHANGE  
THREATENS TERRA, PEOPLE  
EMBARK ON A SPACESHIP  
AND GO OUTWARD,  
INTO THE COSMOS.

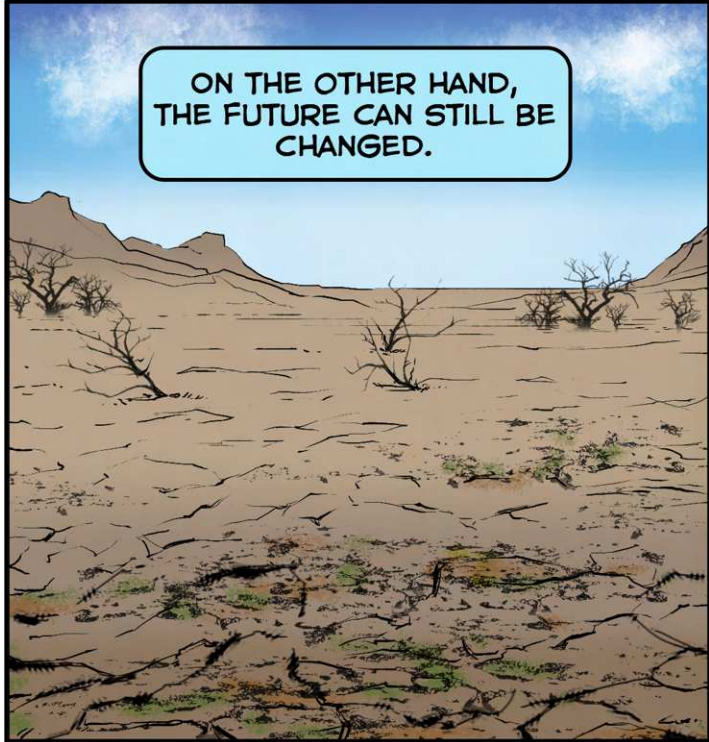
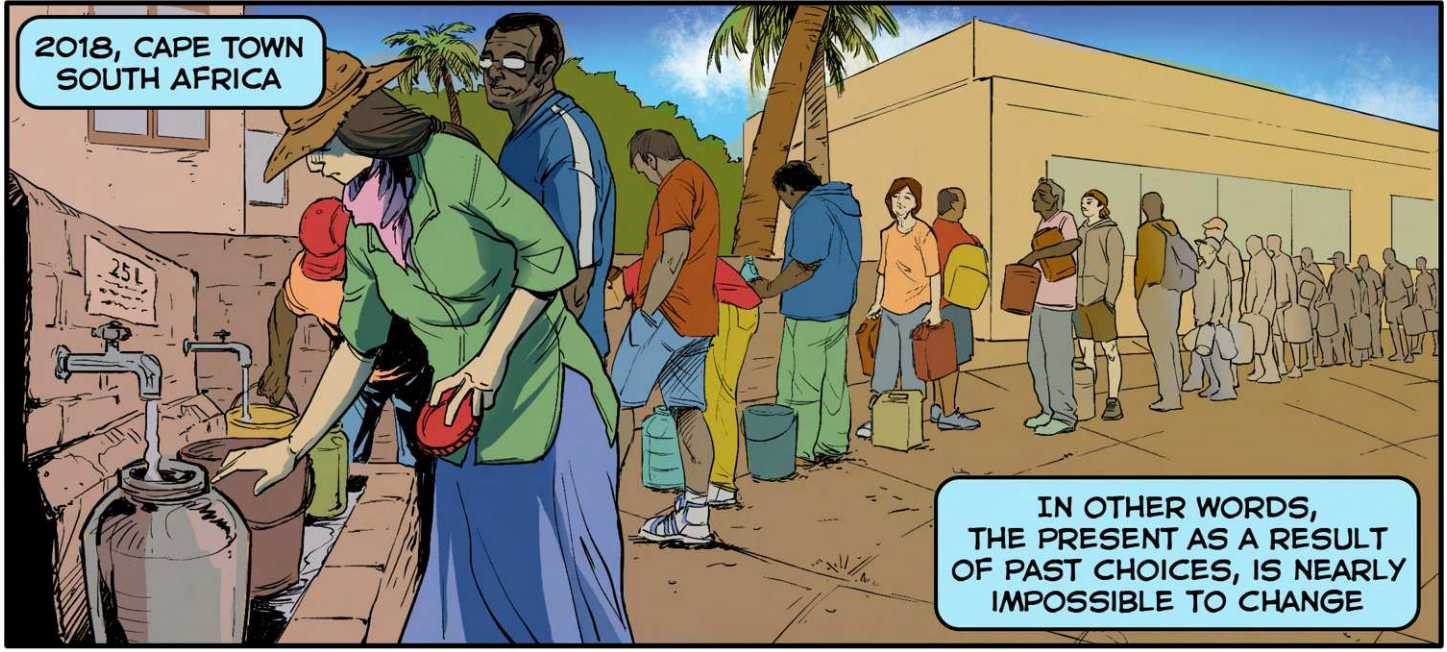
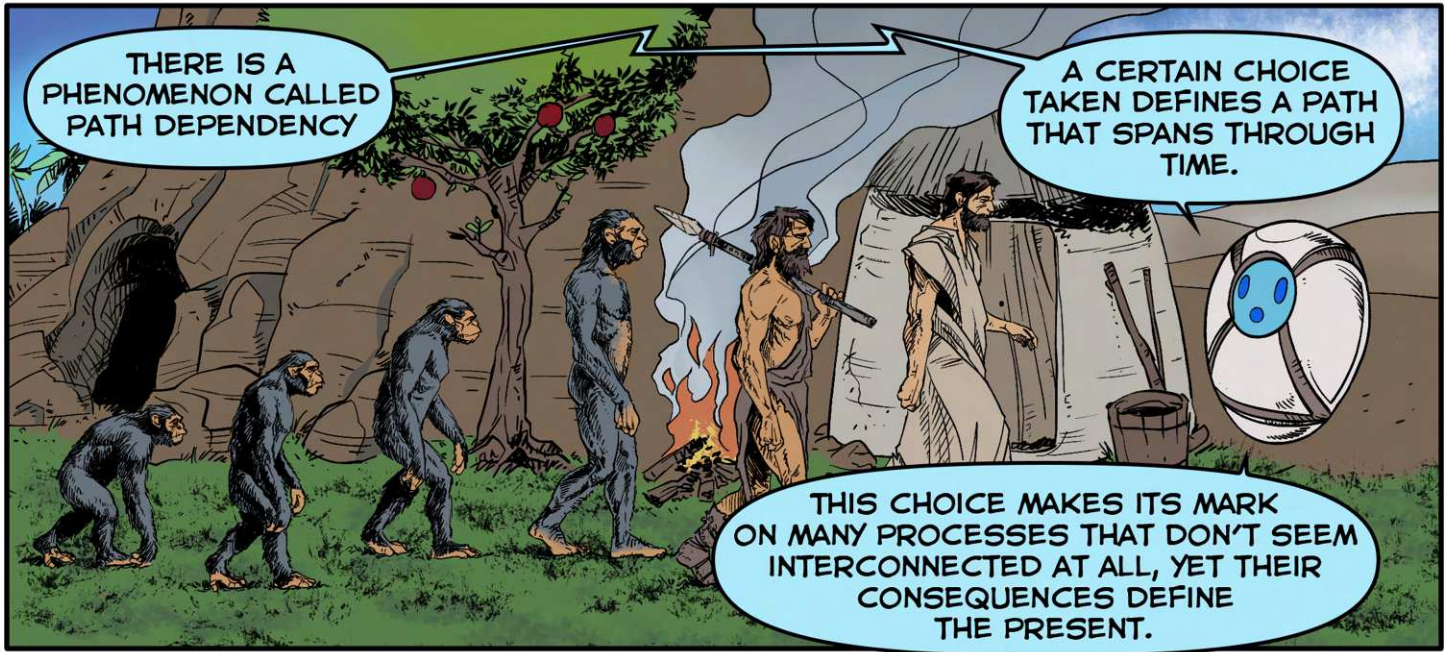
IN SEARCH  
OF A NEW  
TERRA.

A SPECTACULAR  
MIGRATION INTO  
THE ABYSS.

A SPACE  
ODYSSEY, AS  
ARTHUR C. CLARKE  
WOULD SAY.

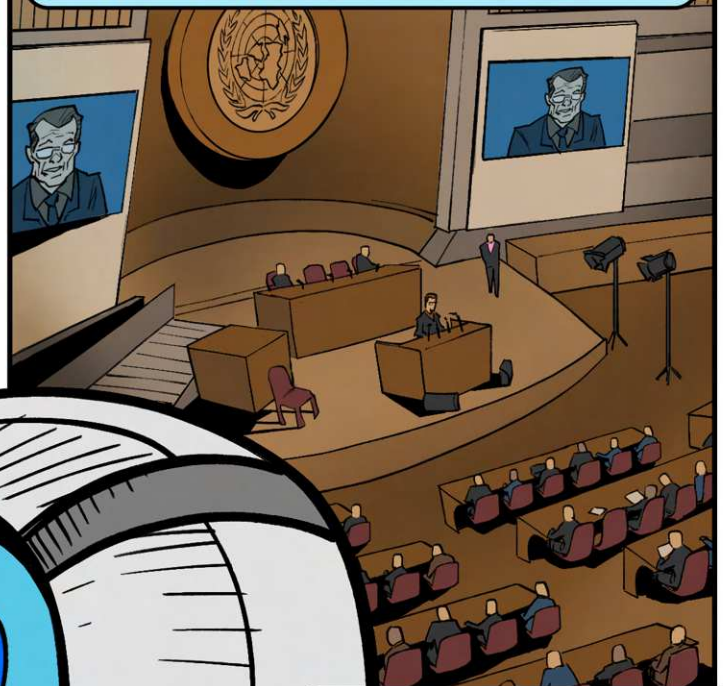






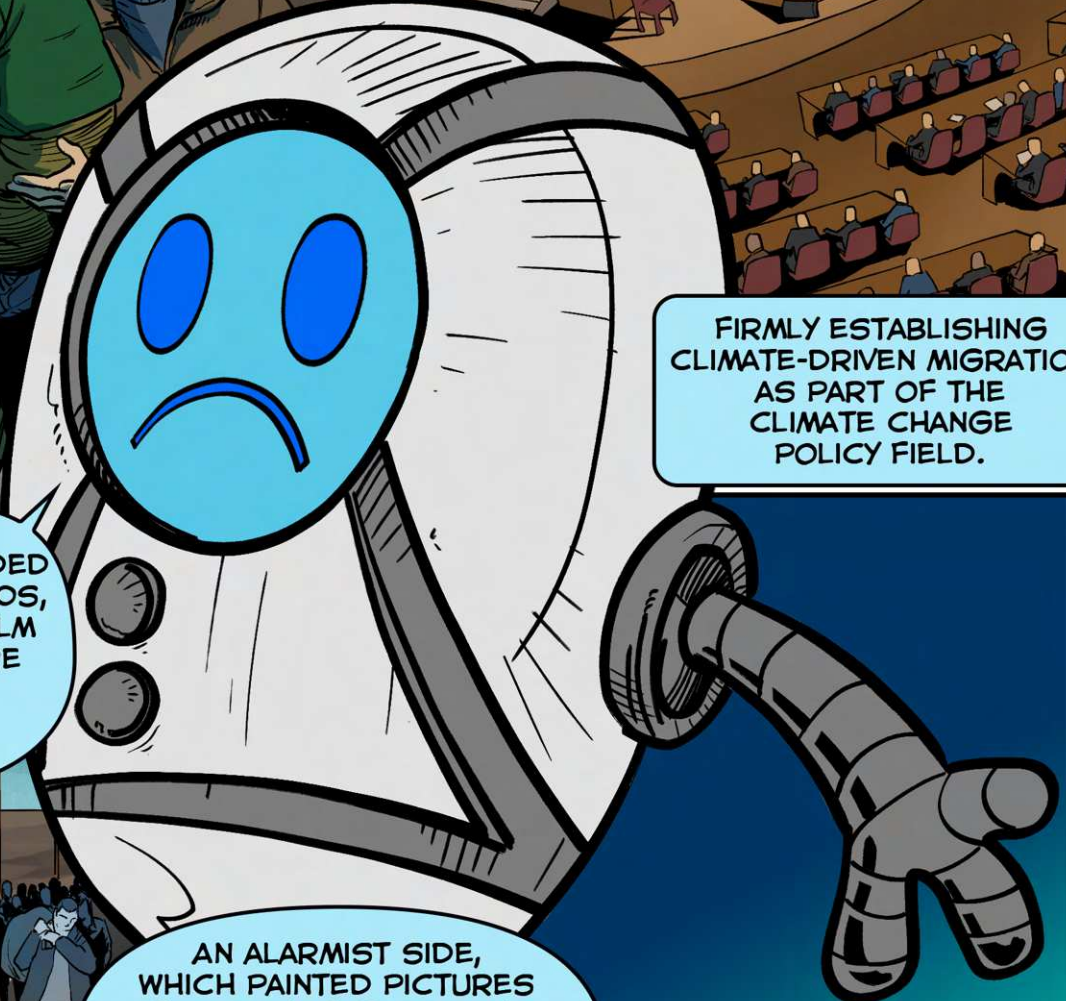
CLIMATE REFUGEES CAME INTO THE PUBLIC DISCOURSE IN 1985 WHEN UN EXPERT ESSAM EL-HINNAWI DEFINED THEM AS "PEOPLE WHO HAVE BEEN FORCED TO LEAVE THEIR TRADITIONAL HABITAT BECAUSE OF ENVIRONMENTAL DISRUPTION THAT JEOPARDIZED THEIR EXISTENCE AND SERIOUSLY AFFECTED THEIR QUALITY OF LIFE"

A 1992 REPORT FROM THE INTERGOVERNMENTAL PANEL ON CLIMATE CHANGE THEN CONCLUDED THAT "THE GRAVEST EFFECTS OF CLIMATE CHANGE MAY BE THOSE ON HUMAN MIGRATION",



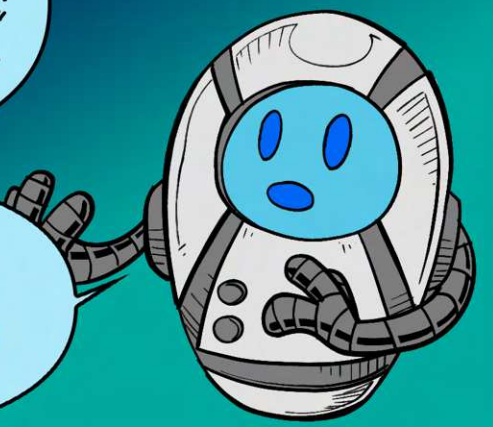
FIRMLY ESTABLISHING CLIMATE-DRIVEN MIGRATION AS PART OF THE CLIMATE CHANGE POLICY FIELD.

DEBATES THEN UNFOLDED THROUGHOUT THE 1990S, IN THE ACADEMIC REALM IN PARTICULAR, WHERE DIVIDES EMERGED BETWEEN TWO OPPOSING SIDES.

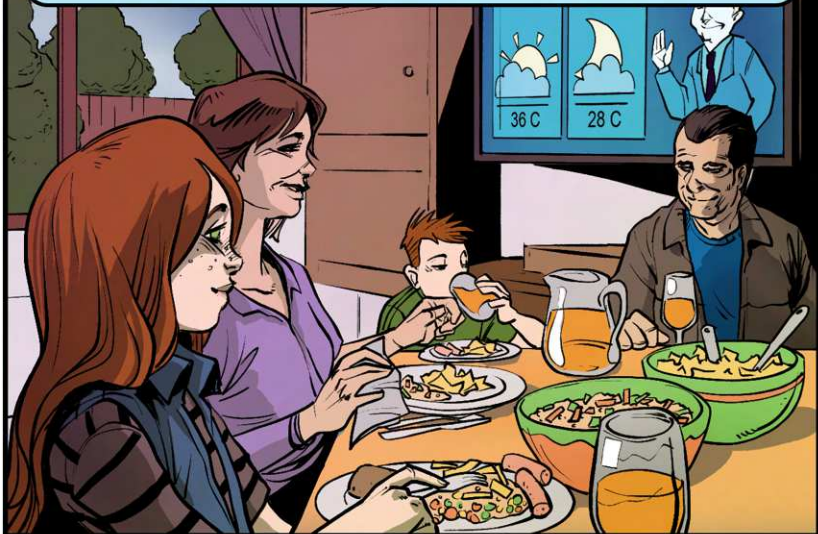


AN ALARMIST SIDE, WHICH PAINTED PICTURES OF MASSIVE FUTURE WAVES OF HUNDREDS OF MILLIONS OF "ENVIRONMENTAL REFUGEES" ESSENTIALLY FRAMED THESE REFUGEES AS A SECURITY THREAT.

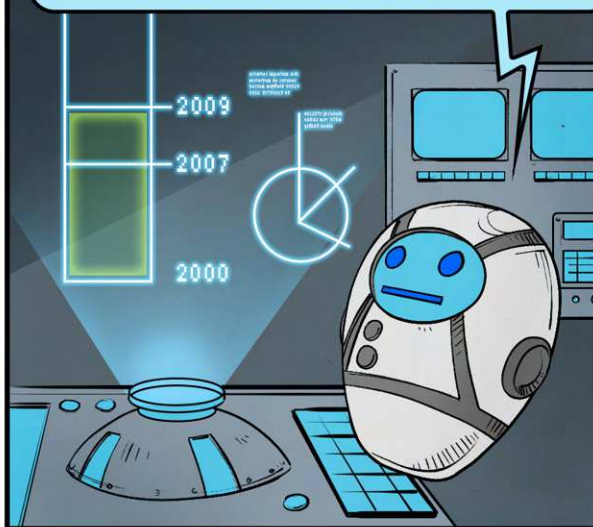
WHILE THE OTHER SIDE STRESSED THE COMPLEXITY OF THESE MIGRATION PATTERNS, AS WELL AS QUESTIONING THE FUTURE ESTIMATES IN NUMBERS



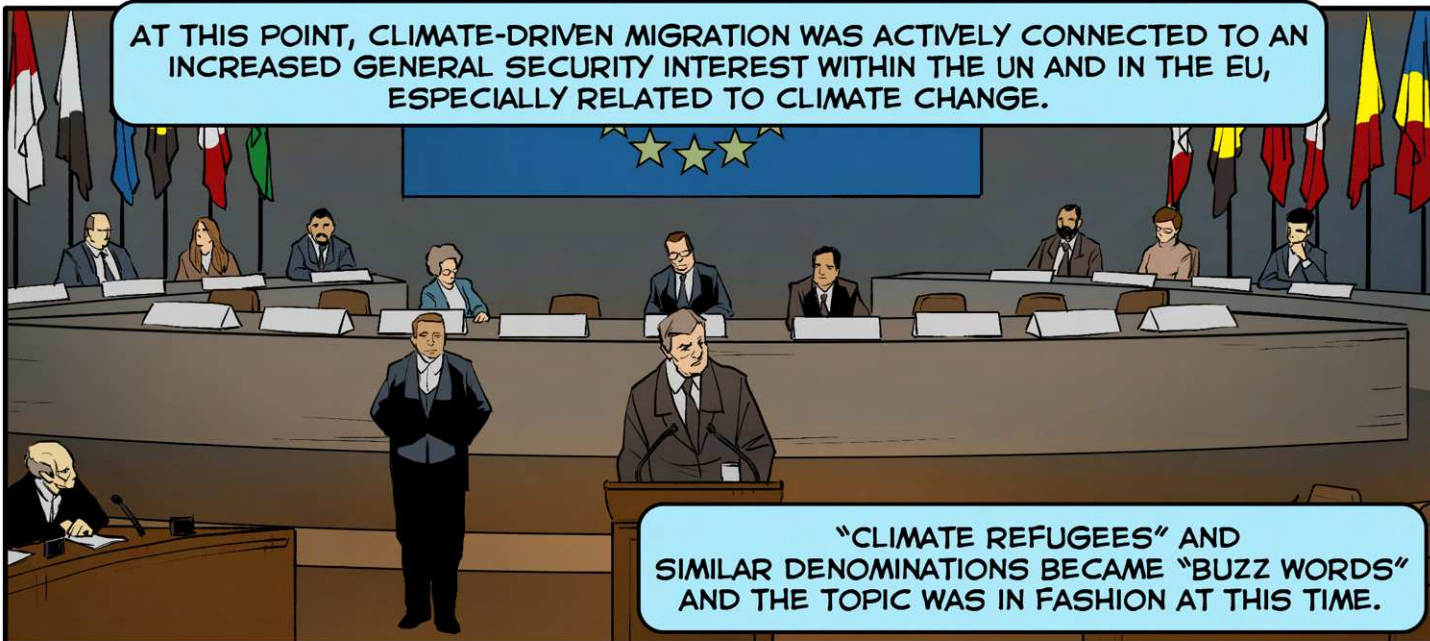
DESPITE THE ACADEMIC DIVIDES IN THE 1990S AND EARLY 2000S, CLIMATE-DRIVEN MIGRATION WAS STILL A RELATIVELY PERIPHERAL ISSUE, NOT VERY WELL-KNOWN AMONG THE BROADER PUBLIC.



A CLOSE TRACING OF THE PROCESS REVEALS THAT THE ISSUE EXPERIENCED A GREAT LEAP IN INTERNATIONAL ATTENTION AROUND THE YEARS 2007-2009.

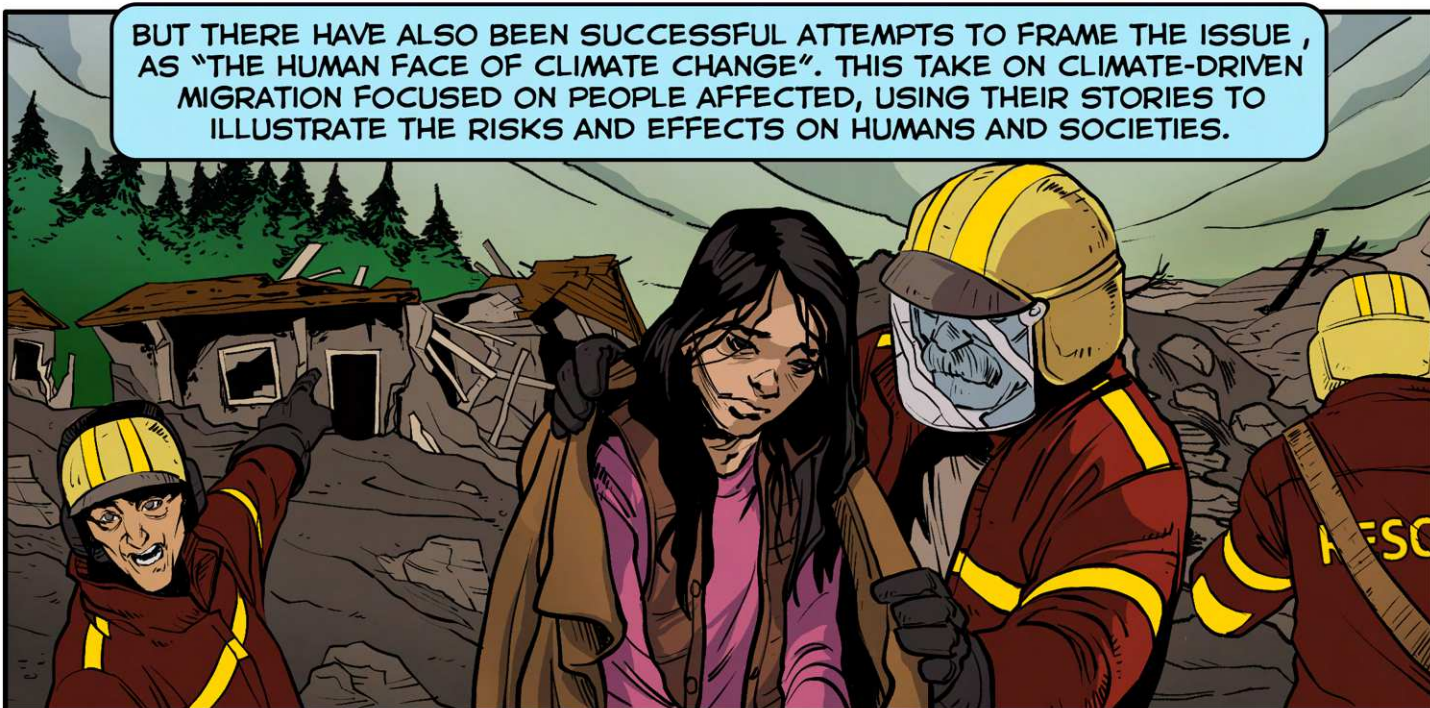


AT THIS POINT, CLIMATE-DRIVEN MIGRATION WAS ACTIVELY CONNECTED TO AN INCREASED GENERAL SECURITY INTEREST WITHIN THE UN AND IN THE EU, ESPECIALLY RELATED TO CLIMATE CHANGE.



"CLIMATE REFUGEES" AND SIMILAR DENOMINATIONS BECAME "BUZZ WORDS" AND THE TOPIC WAS IN FASHION AT THIS TIME.

BUT THERE HAVE ALSO BEEN SUCCESSFUL ATTEMPTS TO FRAME THE ISSUE , AS "THE HUMAN FACE OF CLIMATE CHANGE". THIS TAKE ON CLIMATE-DRIVEN MIGRATION FOCUSED ON PEOPLE AFFECTED, USING THEIR STORIES TO ILLUSTRATE THE RISKS AND EFFECTS ON HUMANS AND SOCIETIES.

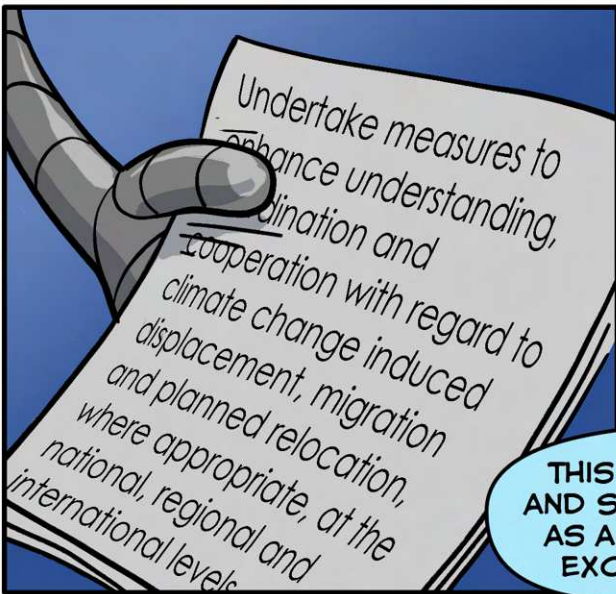




AT COP14 IN POZNAN, CLIMATE CHANGE AND HUMAN MOBILITY WERE PRESENT IN BACKGROUND DOCUMENTS, BUT NOT INCLUDED IN THE FINAL TEXT.



THINGS GOT BETTER AT COP16, WHERE PARTIES WERE INVITED TO TAKE SOME MEASURES, ALBEIT VAGUELY.

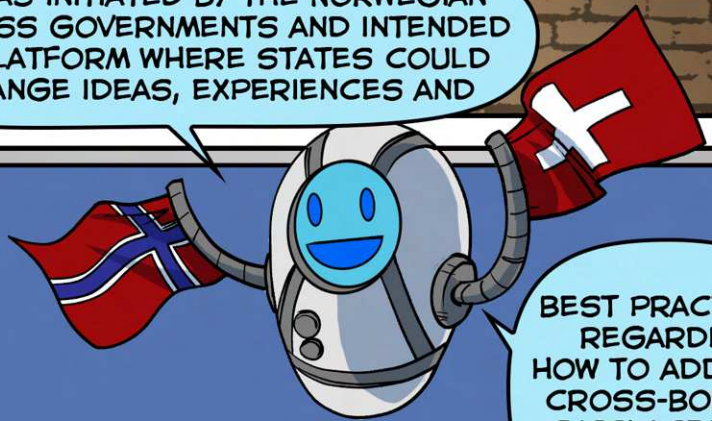


DESPITE EFFORTS, IT TOOK YEARS TO SEE A DECISIVE STEP. FINALLY, THAT WAS THE NANSEN INITIATIVE.

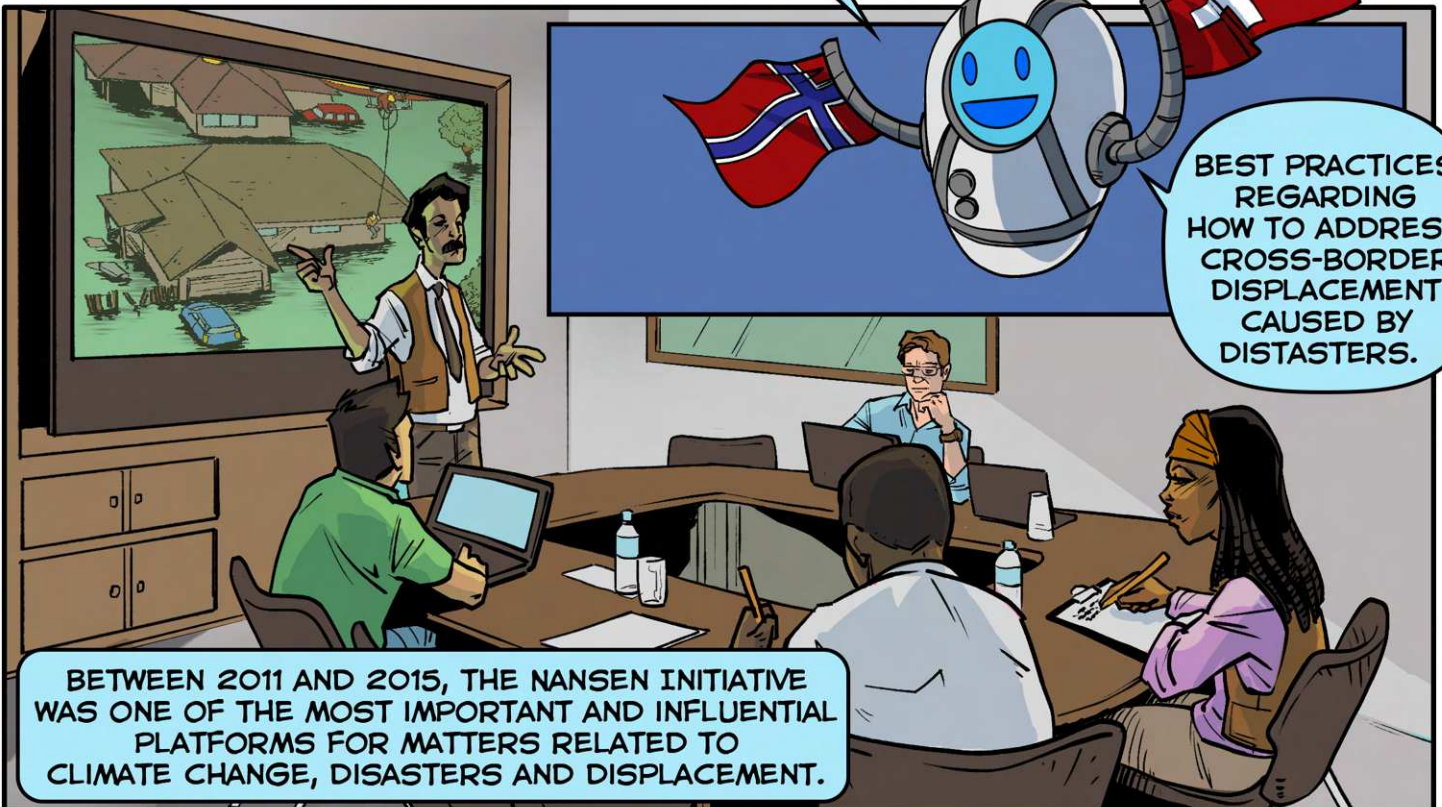
# THE NANSEN INITIATIVE

FOR INDUCED CROSS-BORDER DISPLACEMENT

THIS WAS INITIATED BY THE NORWEGIAN AND SWISS GOVERNMENTS AND INTENDED AS A PLATFORM WHERE STATES COULD EXCHANGE IDEAS, EXPERIENCES AND

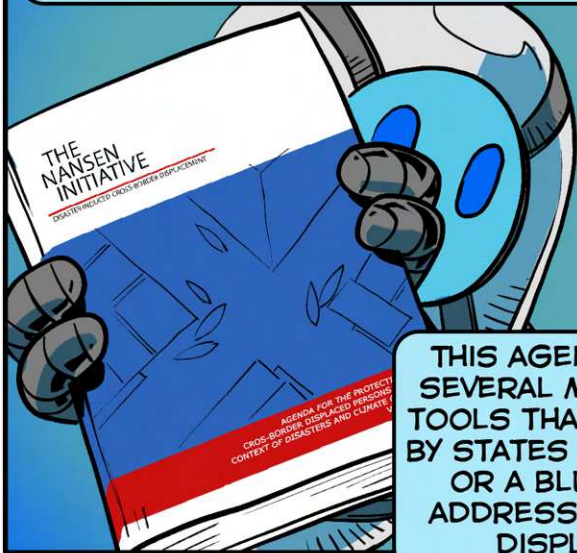


BEST PRACTICES REGARDING HOW TO ADDRESS CROSS-BORDER DISPLACEMENT CAUSED BY DISTASTERS.



BETWEEN 2011 AND 2015, THE NANSEN INITIATIVE WAS ONE OF THE MOST IMPORTANT AND INFLUENTIAL PLATFORMS FOR MATTERS RELATED TO CLIMATE CHANGE, DISASTERS AND DISPLACEMENT.

IN THE FALL OF 2015, GLOBAL CONSULTATIONS RESULTED IN THE SO-CALLED "NANSEN PROTECTION AGENDA".



THIS AGENDA OUTLINES SEVERAL MEASURES AND TOOLS THAT CAN BE USED BY STATES AS INSPIRATION OR A BLUEPRINT FOR ADDRESSING DISASTER DISPLACEMENT

THE BIG EVENT OF THE 2015 WAS THE COP21 IN PARIS



THE CONCLUSION OF THE MEETING IN PARIS WAS TO CREATE A TASK FORCE TO "DEVELOP RECOMMENDATIONS FOR INTEGRATED APPROACHES TO AVERT, MINIMIZE AND ADDRESS DISPLACEMENT RELATED TO THE ADVERSE IMPACTS OF CLIMATE CHANGE".

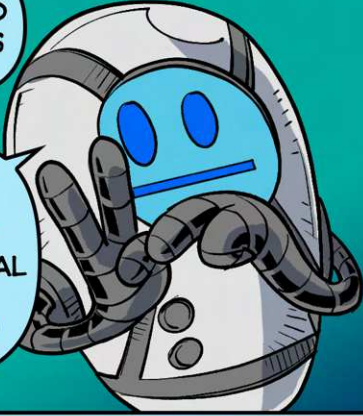


EVEN THOUGH THEY WERE IMPORTANT STEPS FORWARD, NEITHER THE PROTECTION AGENDA NOR THE CREATION OF THE TASK FORCE WERE PROMISES FOR ENHANCED PROTECTION MECHANISMS FOR THE CONCERNED GROUPS.



YEARS OF MEETINGS AND NEGOTIATIONS FOLLOWED.

YEARS WHICH LED TO THE CREATION OF TWO NEW GLOBAL COMPACTS: THE GCM AND THE GCR\*



THESE DOCUMENTS SUGGEST BEST PRACTICES TO ADMIT AND RELOCATE THOSE WHO WERE FORCED TO LEAVE THEIR COUNTRIES OF ORIGIN DUE TO SUDDEN NATURAL DISASTERS

THE PRACTICES INCLUDE THE ISSUING OF HUMANITARIAN VISAS



PRIVATE SPONSORSHIPS

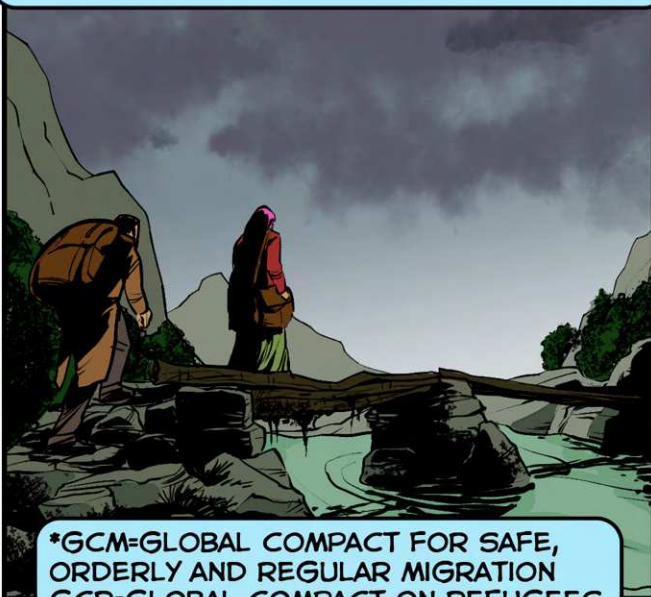


AND TEMPORARY WORK PERMITS

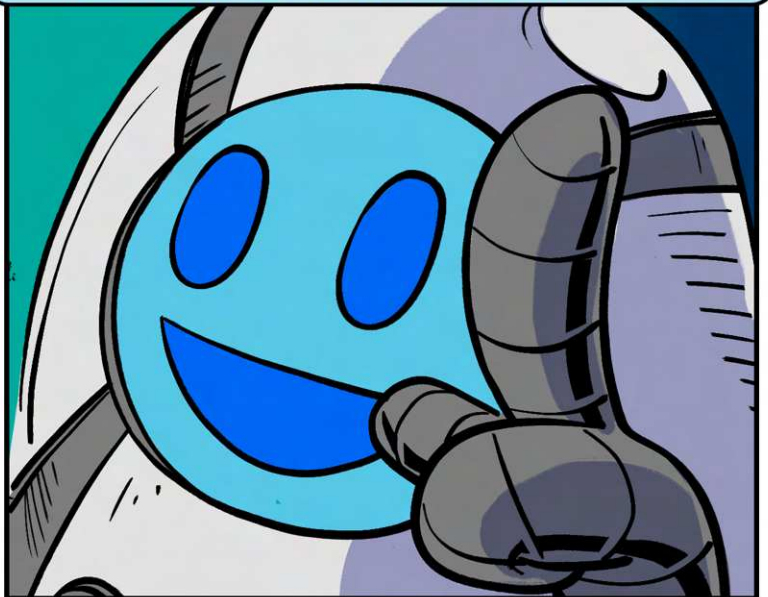


IN RELATION TO SLOW-ONSET DISASTERS, THE COMPACT AIMS TO STRENGTHEN SOLUTIONS, SUCH AS PLANNED RELOCATION AND VISA OPTIONS

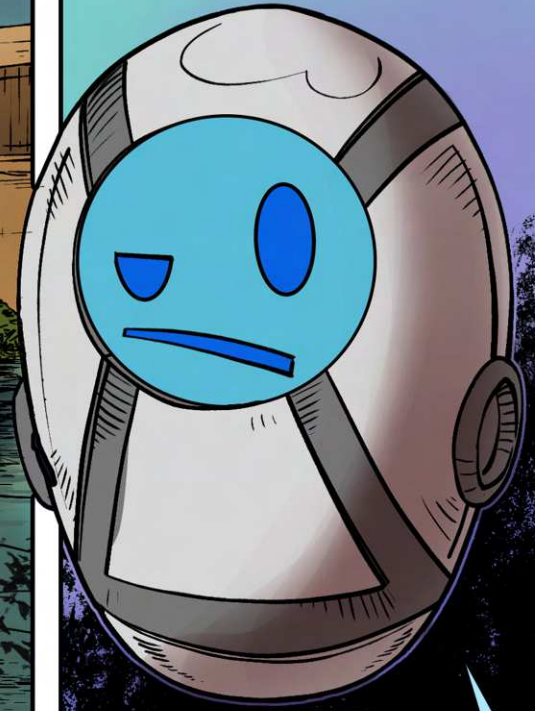
OVERALL, THE GCM GIVES MORE ATTENTION TO CLIMATE-DRIVEN MIGRATION THAN HAS BEEN GIVEN IN PREVIOUS SIGNIFICANT MIGRATION OR CLIMATE RELATED AGREEMENTS IN THE UN SYSTEM.



\*GCM=GLOBAL COMPACT FOR SAFE, ORDERLY AND REGULAR MIGRATION  
GCR=GLOBAL COMPACT ON REFUGEES



ON A GLOBAL LEVEL, WE SEE THAT CLIMATE CHANGE, ENVIRONMENTAL DEGRADATION AND NATURAL DISASTERS ARE ALREADY CAUSES OF DISPLACEMENT.

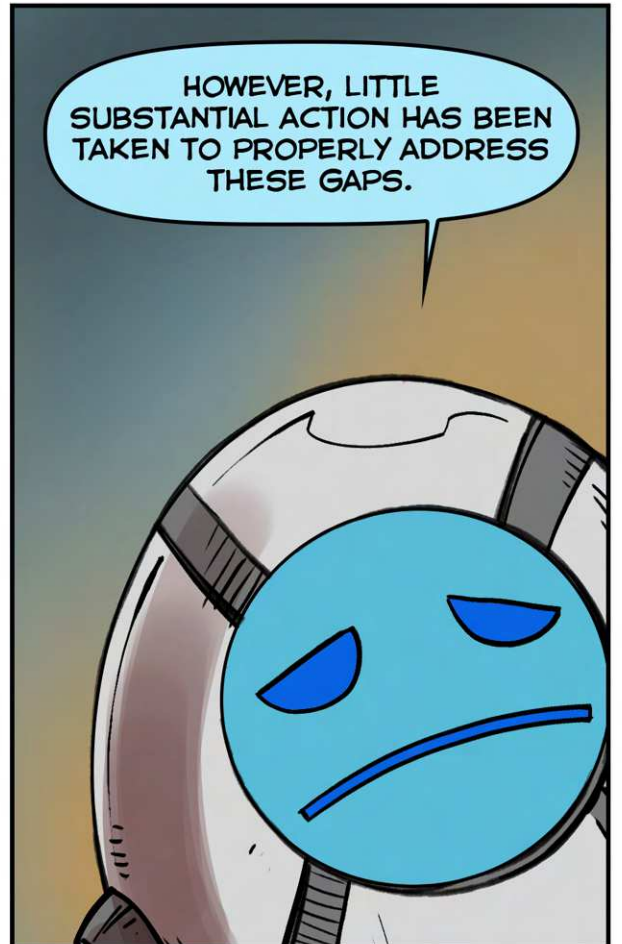


CONVINCING AND FAR-REACHING EVIDENCE SHOWS HOW THESE FACTORS INTERACT WITH MIGRATION AND MOBILITY.

AS YOU CAN SEE, THERE HAS BEEN A GROWING AWARENESS IN THE INTERNATIONAL SYSTEM REGARDING CLIMATE CHANGE AND MIGRATION AND THE ASSOCIATED LEGAL GAPS.



HOWEVER, LITTLE SUBSTANTIAL ACTION HAS BEEN TAKEN TO PROPERLY ADDRESS THESE GAPS.



BUT, IN THE END,  
WHAT IS CLIMATE-DRIVEN  
MIGRATION?

CLIMATE-DRIVEN MIGRATION  
CONCERNS MIGRATION PATTERNS  
THAT ARE CAUSED BY ENVIRONMENTAL  
DEGRADATION OR NATURAL  
CATASTROPHES OF SOME KIND.

CLIMATE CHANGE DRIVES MIGRATION AND  
DISPLACEMENT RIGHT NOW, AND IT IS LIKELY TO  
INCREASINGLY DO SO IN THE FUTURE.



HUGE NUMBERS OF  
PEOPLE ARE DISPLACED  
EVERY YEAR AS A RESULT  
OF DIFFERENT KINDS OF  
NATURAL DISASTER.

THE INTERNAL  
DISPLACEMENT MONITORING  
CENTRE ESTIMATES THAT  
ON AVERAGE, 24 MILLION  
PEOPLE HAVE BEEN  
DISPLACED EACH YEAR  
BETWEEN 2008  
AND 2018.



THIS CAN BE  
COMPARED TO THE FIGURE OF  
10.8 MILLION DISPLACED DUE  
TO CONFLICT OR VIOLENCE  
IN 2018.



IT'S A  
WHOLE COUNTRY  
ON THE MOVE!

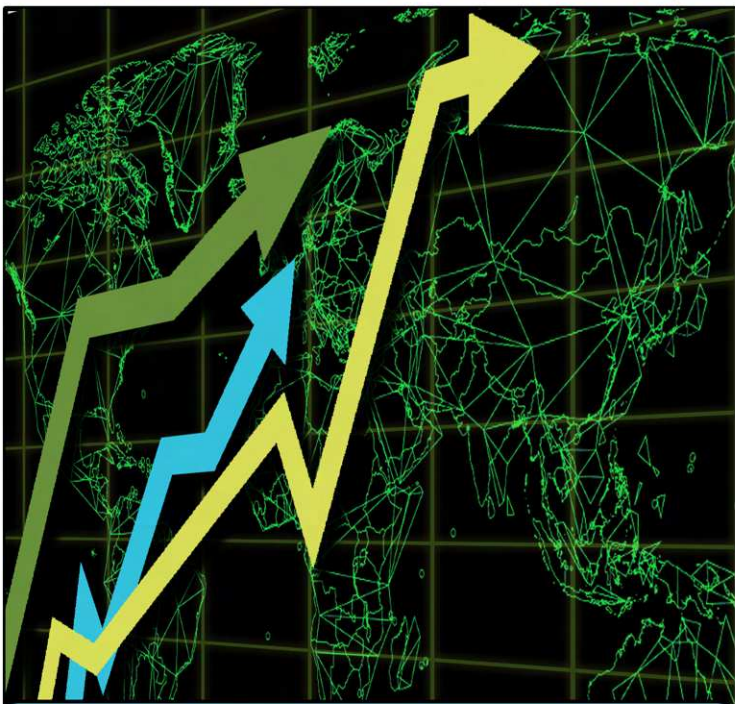


AS WITH  
WAR AND  
VIOLENCE,

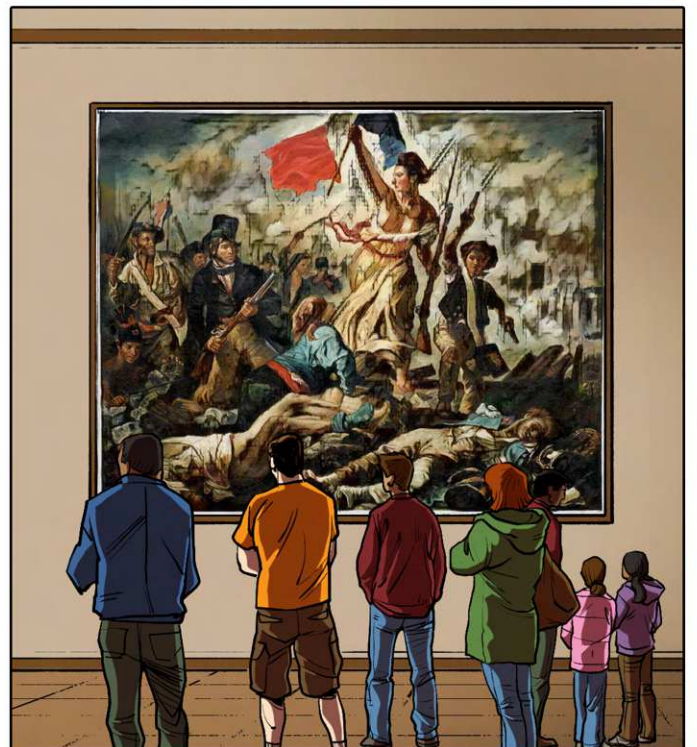
CLIMATE CHANGE  
CAN DEPRIVE  
PEOPLE OF THEIR  
FREEDOM.



LIBERAL DEMOCRACIES SUPPORT THE FREEDOM, DIGNITY AND WELLBEING OF ALL INDIVIDUALS, WHO SHOULD BE GIVEN THE CHOICE TO BUILD A DIGNIFIED LIFE AT HOME AND ELSEWHERE.



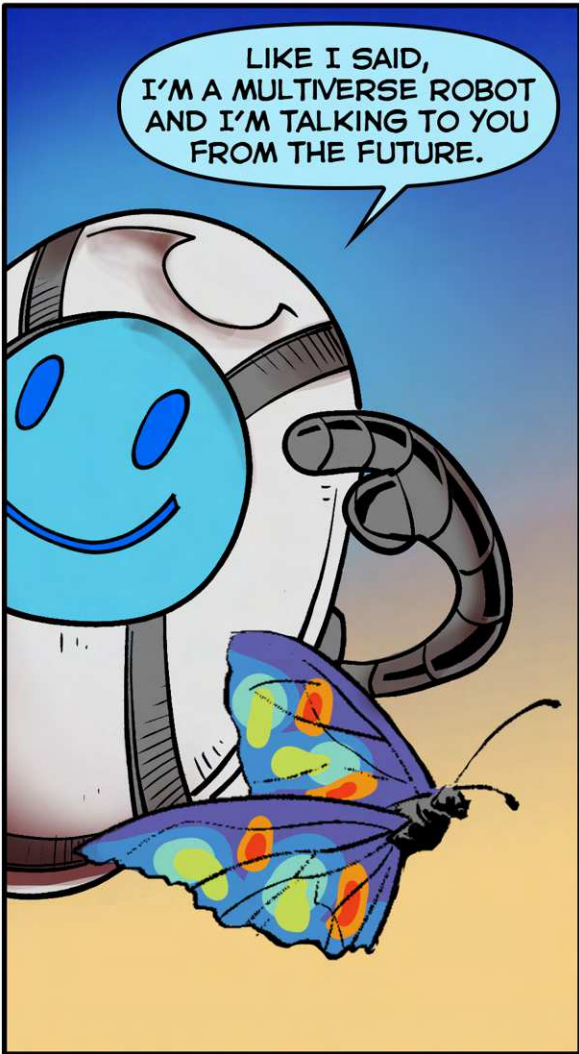
THROUGHOUT HISTORY, LIBERALS HAVE PAVED THE WAY FOR THE DEVELOPMENT OF SOCIETY, THROUGH INTERNATIONAL COOPERATION AND TECHNOLOGICAL INNOVATIONS.



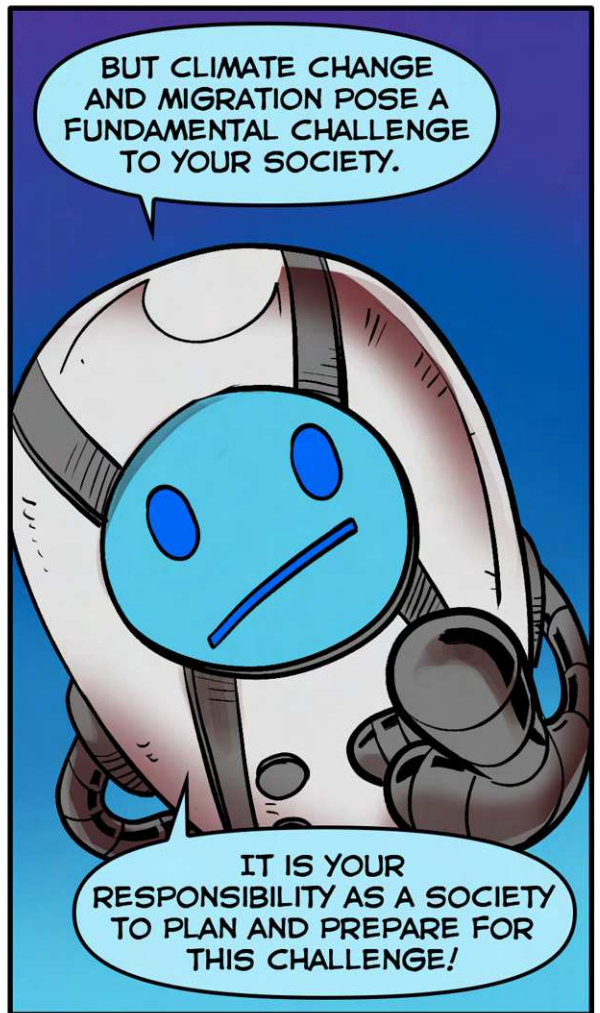
GUIDED BY LIBERAL VALUES, SUCH AS FREEDOM AND HUMAN DIGNITY, LIBERALS HAVE MANAGED TO ADDRESS COMPLEX CHALLENGES LIKE THIS BEFORE.



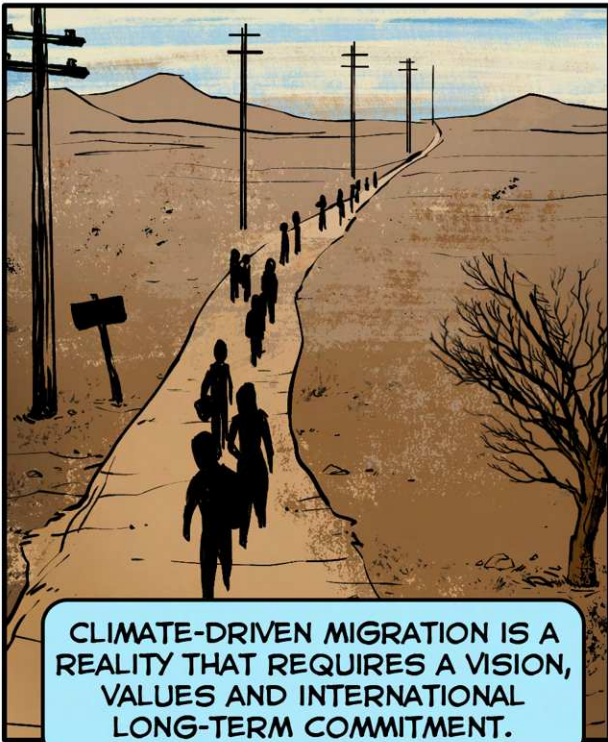
THE EUROPEAN UNION SHOULD RISE TO THE CHALLENGE AND DEVELOP SUSTAINABLE SOLUTIONS TO MEET THE REALITY OF CLIMATE CHANGE AND MIGRATION - SOLUTIONS WHERE FREEDOM GOES HAND IN HAND WITH RESPONSIBILITY AND RESPECT FOR OTHERS.



THIS HAS CONTRIBUTED TO A LESS PROSPEROUS ENVIRONMENT IN DEALING WITH THE ISSUE OF CLIMATE-DRIVEN MIGRATION, LEADING TO SOLUTIONS CHARACTERISED EITHER BY IGNORANCE OR A SHORT-TERM PERSPECTIVE.







CLIMATE-DRIVEN MIGRATION IS A REALITY THAT REQUIRES A VISION, VALUES AND INTERNATIONAL LONG-TERM COMMITMENT.



THE EU SHOULD RISE TO THE CHALLENGE AND PROMOTE SOLUTIONS GUIDED BY OUR SHARED VALUES: FREEDOM AND HUMAN DIGNITY.

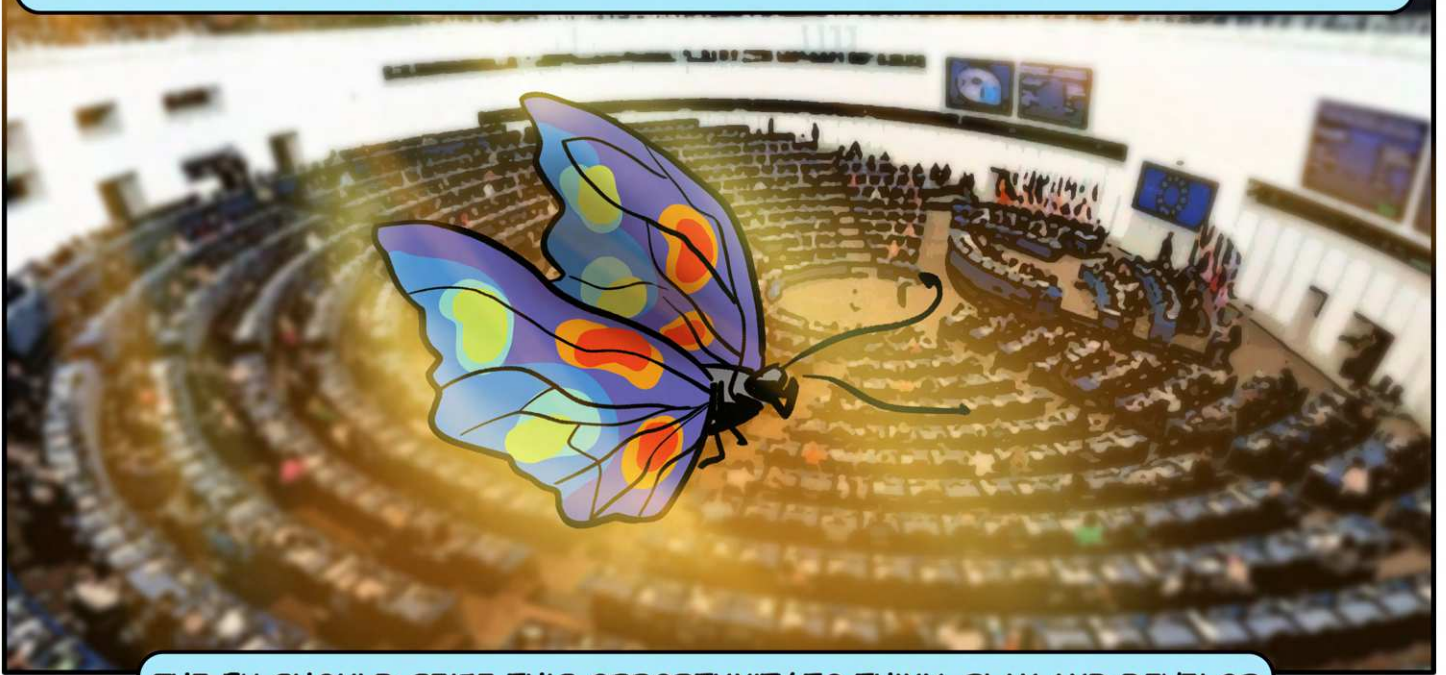
AS THE WORLD CHANGES, THE EU NEEDS TO LEAD BUT ALSO FACILITATE THE EXCHANGE OF KNOWLEDGE. WE NEED TO EMPOWER PEOPLE TO FIND THE BEST SOLUTIONS WHERE THEY ARE.



AS A GLOBAL CLIMATE LEADER AND A FACILITATOR, THE EUROPEAN UNION WILL INSPIRE OTHER REGIONS TO TAKE RESPONSIBILITY AND FIND SOLUTIONS THAT FIT THEM, THROUGH OPEN MARKETS, FREEDOM AND PROSPERITY.



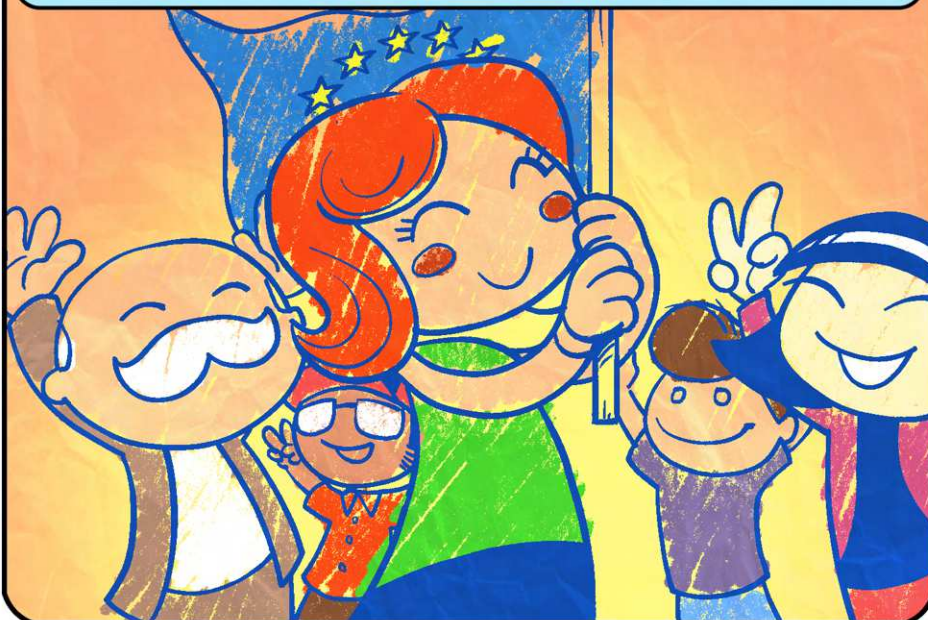
WITH A DYNAMIC EUROPEAN PARLIAMENT IN PLACE, EUROPEAN CITIZEN'S SUPPORT FOR CLIMATE ACTION AND THE VON DER LEYEN COMMISSION'S AMBITIOUS CLIMATE CHANGE GOALS, THE EU STANDS AT A CROSSROADS.



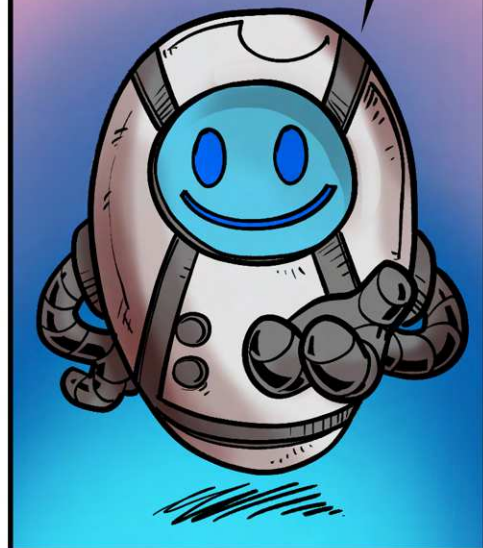
THE EU SHOULD SEIZE THIS OPPORTUNITY TO THINK, PLAN AND DEVELOP A HOLISTIC AND SUSTAINABLE APPROACH FOR THE FUTURE.



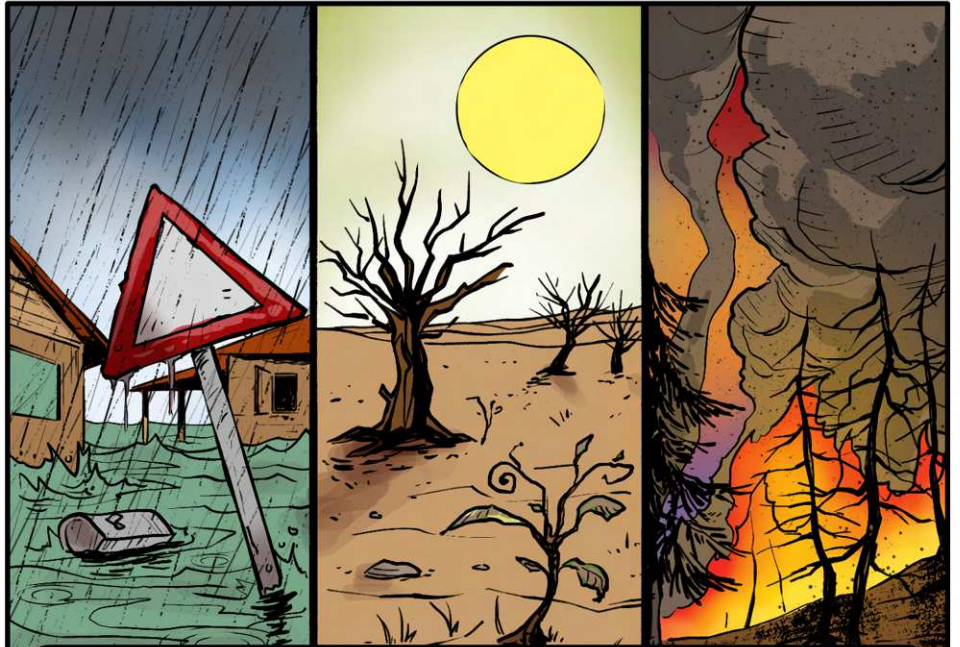
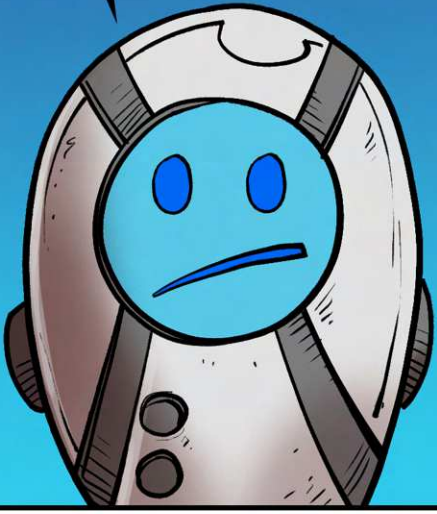
THE EU HAS THE OPPORTUNITY TO BECOME THE LEADING INTERNATIONAL FORCE IN ADDRESSING CLIMATE-DRIVEN MIGRATION.



IT'S UP TO YOU IF THE EU TAKES ADVANTAGE OF THIS OPPORTUNITY.



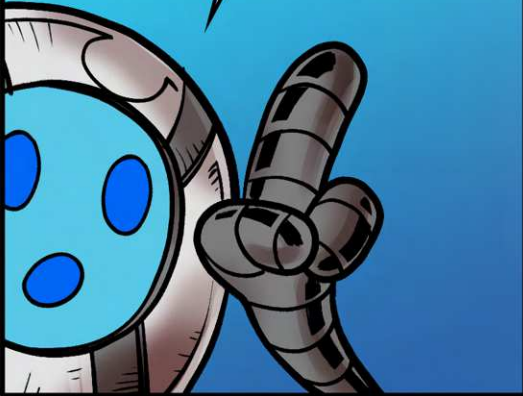
HERE IS WHAT  
NEEDS TO BE DONE.  
FOR YOUR WORLD.  
FOR YOUR UNIVERSE.  
FOR YOUR FUTURE.



IT IS IMPORTANT TO KEEP IN MIND THAT CLIMATE-DRIVEN  
MIGRATION AND/OR DISPLACEMENT ENCOMPASSES A  
WIDE RANGE OF MOBILITY PATTERNS AND CAUSALITIES.

AN ADEQUATE RESPONSE MUST  
THEREFORE INCLUDE DIFFERENT  
TYPES OF MEASURES  
AND SOLUTIONS.

THE COMPLEXITY OF CLIMATE DRIVEN MIGRATION MUST  
NOT MAKE US LOSE SIGHT OF THE REMAINING LEGAL  
GAPS, WITH CROSS-BORDER DISPLACEMENT BEING OF  
UTMOST CONCERN.

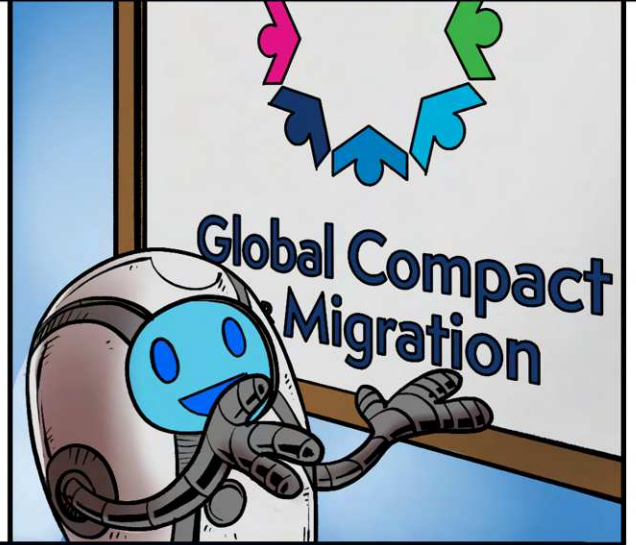


IN ADDITION, POLICY MAKERS MUST REMEMBER THAT, EVEN  
THOUGH NATIONAL AND REGIONAL EXAMPLES MIGHT  
LEAD THE WAY - CLIMATE- DRIVEN MIGRATION, LIKE ALL  
MIGRATION, CANNOT BE PROPERLY ADDRESSED UNILATERALLY



IN THE EU, MORE EFFORTS NEED TO BE PUT INTO STREAMLINING DEFINITIONS IN ORDER TO CREATE A COMMON LANGUAGE AND APPROACH TOWARDS CLIMATE-DRIVEN MIGRATION.

TOGETHER WITH ITS PARTNERS, THE EU SHOULD MAKE USE OF AND SAFEGUARD THE GLOBAL COMPACT FOR SAFE, ORDERLY AND REGULAR MIGRATION AS A FORUM FOR NEGOTIATIONS AND DISCUSSIONS.



IN DOING SO, EU INSTITUTIONS AND REPRESENTATIVES SHOULD: STRIVE TO ADVANCE AND PROMOTE ISSUES RELATED TO CLIMATE-DRIVEN MIGRATION IN THE GCM CONTEXT --



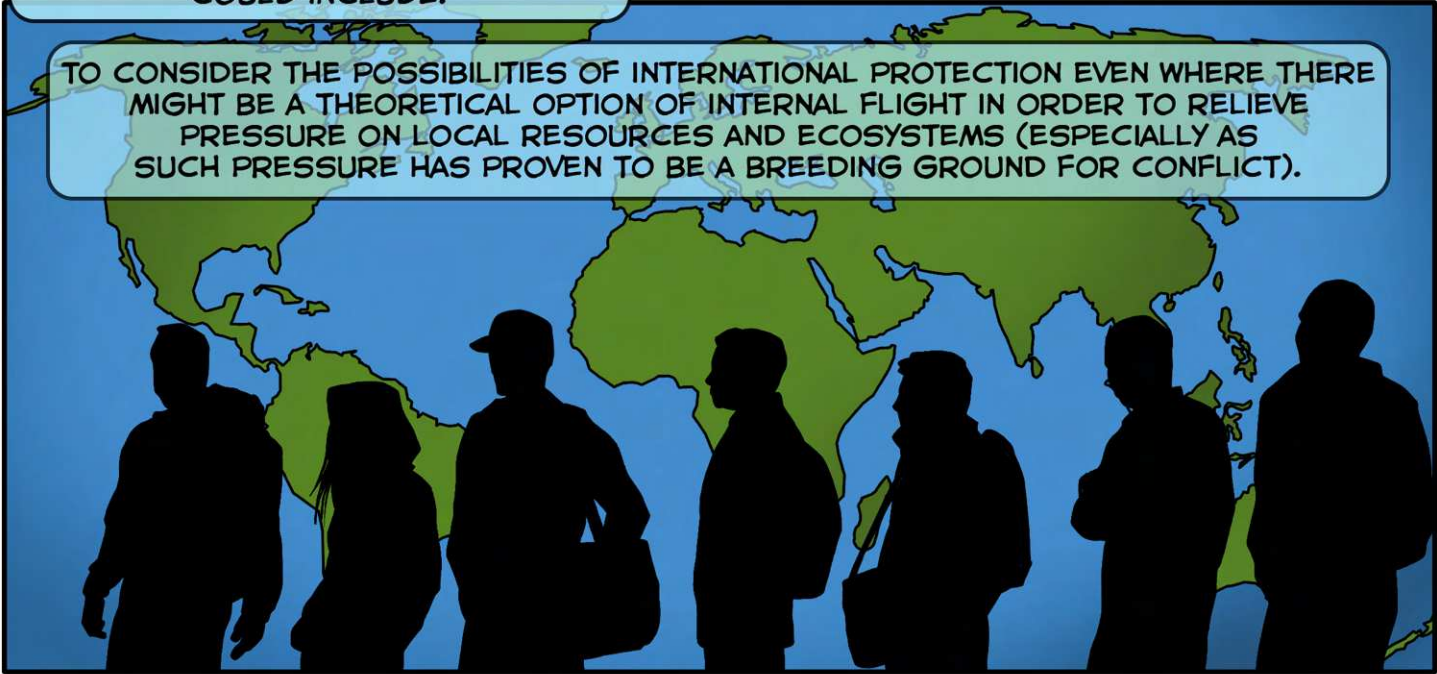
-- AND ENCOURAGE ALL MEMBER STATES TO SIGN THE COMPACT.



TO RECOGNIZE NATURAL DISASTERS AS A CAUSE OF FORCED DISPLACEMENT - AND THUS A PROVISION TO ATTAIN PROTECTION STATUS WITHIN THE FRAMES OF THE NEW EU QUALIFICATION REGULATION.



A LARGE GROUP OF CLIMATE-DRIVEN MIGRANTS ARE NOT SUFFICIENTLY COVERED BY EXISTING PROTECTION MECHANISMS. EU PROTECTION FOR CLIMATE-DRIVEN MIGRANTS SHOULD THEREFORE BE STRENGTHENED. SUCH STRENGTHENING MEASURES COULD INCLUDE:



TO CONSIDER THE POSSIBILITIES OF INTERNATIONAL PROTECTION EVEN WHERE THERE MIGHT BE A THEORETICAL OPTION OF INTERNAL FLIGHT IN ORDER TO RELIEVE PRESSURE ON LOCAL RESOURCES AND ECOSYSTEMS (ESPECIALLY AS SUCH PRESSURE HAS PROVEN TO BE A BREEDING GROUND FOR CONFLICT).

TO ASSIST PEOPLE AND STATES IN NEED WITH FINDING SAFE SPOTS AFTER SUDDEN-ONSET DISASTERS. THIS CAN BE DONE THROUGH HUMANITARIAN ASSISTANCE, TEMPORARY PERMITS OR HUMANITARIAN VISAS.



TO ASSIST INTERNATIONAL HUMANITARIAN ORGANISATIONS AND EXPOSED STATES WITH RESETTLEMENT-LIKE SOLUTIONS FOR DISPLACED PEOPLE, WHERE APPROPRIATE.

THE WORLD IS CHANGING. BUT THE FUTURE IS NOT SOMETHING TO BE AFRAID OF, IF YOU WORK TOGETHER AND LEAVE NOBODY BEHIND.



The European Liberal Forum (ELF) is the official political foundation of the European Liberal Party, the ALDE Party. Together with 47 member organisations, we work all over Europe to bring new ideas into the political debate, to provide a platform for discussion, and to empower citizens to make their voices heard.



We bring together a diverse network of national foundations, think tanks and other experts. At the same time, we are also close to, but independent from, the ALDE Party and other Liberal actors in Europe. In this role, our forum serves as a space for an open and informed exchange of views between a wide range of different actors.

elf

ISBN 978-2-39067-002-5



9 782390 670025